



凌航集团
LINGHANG GROUP



EAST AFRICA COMMERCIAL
& LOGISTICS CENTER
东非商贸物流中心

EACLC

Chamber of Commerce and Project Introduction



About Us



凌航集团
LINGHANG GROUP



EAST AFRICA COMMERCIAL
& LOGISTICS CENTER
东非商贸物流中心

Linghang group was founded in 2004 with diversified projects of industrial investment, property development, overseas constructions, import and export trade, overseas tourism development. the group is headquartered in Shanghai, China, setting up branches in a number of domestic cities, production Manufacturing base & subsidiary in Hongkong, Singapore, Africa, Oceania and others.

Business covers deep processing of agricultural and sideline products, research and development of organic food and green food, health food import and export trade, Construction steel structure, the import and export of machine tools, ship design R&D and manufacturing at home and abroad, as well as Security Products, bus station and commercial city and logistic center, financial investment and other international trade. Products were sold to domestic and foreign markets, in the meanwhile, turnover increased by more than 35% per year.





Group Business



凌航集团
LINGHANG GROUP



**EAST AFRICA COMMERCIAL
& LOGISTICS CENTER**
东非商贸物流中心

Meanwhile, Linghang group accumulates rich financial capital, combines with the application of science and technology and Industry Field experience, international corporate reputation and domestic and international market brand operation and management capabilities, committed to the positive development of industrial investment and related business in Africa.



境外投资

OVERSEAS FINANCIAL INVESTMENT



海外基建

URBAN DEVELOPMENT PLANNING



商务旅游

BUSINESS TOURISM



国际贸易

INTERNATIONAL TRADING



大宗商品贸易

IMPORT AND EXPORT TRADE



食品加工制造

FOOD PROCESSING EXPORT



Project Description



凌航集团
LINGHANG GROUP



EAST AFRICA COMMERCIAL
& LOGISTICS CENTER
东非商贸物流中心

EACLC will become a new industrial city dominated by modern comprehensive trade and logistics industry, integrating wholesale, retail, logistics, warehousing, exhibition, culture, cross-border e-commerce, tourism and trade and other functions. We will build a super-large-scale business logistics center in East Africa, build a large platform connecting Asia and Africa international economic and trade, and comprehensively help the rise of the business logistics industry in East Africa





Project Description

The project is located in the traditional commercial center in the core of the Ubungu area. It is the key area of the strategic development plan of the urban corridor and will become a national-level CBD in the future. The project is **7 kilometers** away from the urban area, **10 kilometers** away from the port, **8 kilometers** away from the railway station, and **14 kilometers** away from the international airport. Strategic location;



凌航集团
LINGHANG GROUP



EAST AFRICA COMMERCIAL
& LOGISTICS CENTER
东非商贸物流中心





Project Size



凌航集团
LINGHANG GROUP



EAST AFRICA COMMERCIAL
& LOGISTICS CENTER
东非商贸物流中心

分类 Classification		拟建指标 Numerical value
总用地面积 site area		43341.11m ²
总建筑面积 building area 74120.35m ²	地上 ground area	72160.66m ²
	地下 underground area	1959.69m ²
计容建筑面积 capacity building area		7216065.m ²
占地面积 ground floor area		23117.32m ²
容积率 floor area ratio		1.66
建筑密度 building coverage ratio		53.34%
绿地率 greening rate		9.2%
机动车位总数 parking unit 578	屋面 roof floor	427
	地面 ground floor	151
分层面积 floor area	底层 ground floor	23117.32m ²
	二层 first floor	22245.68m ²
	三层 second floor	20339.49m ²
	四层 third floor	6284.5m ²
	机房 roof floor	143.52m ²
	地下室 basement	1959.69m ²



Project Description



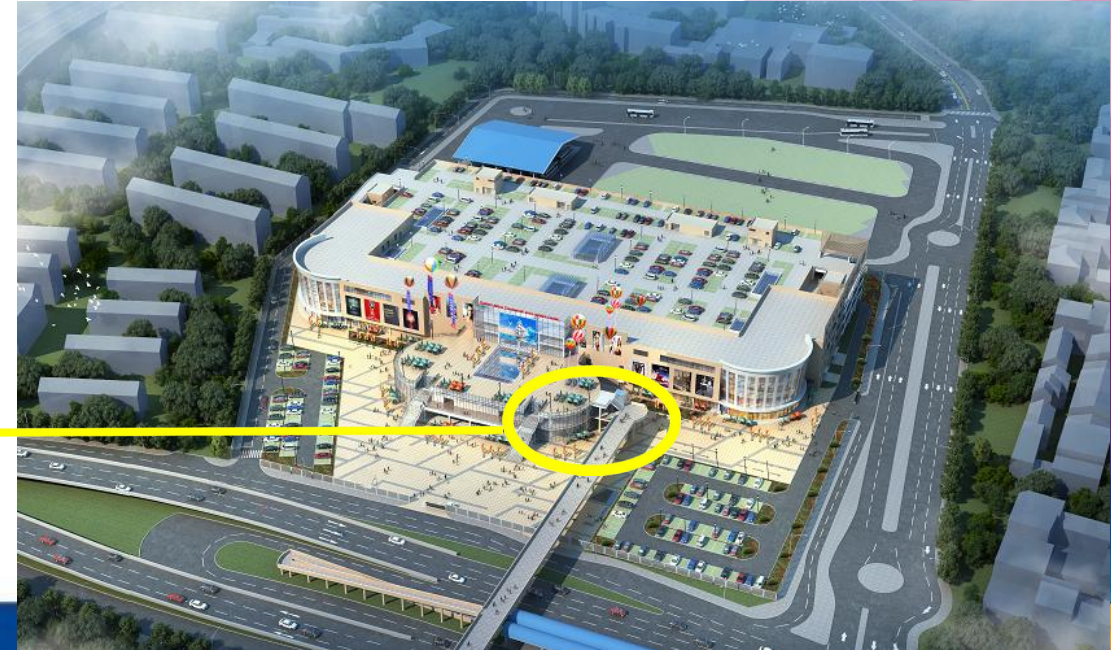
凌航集团
LINGHANG GROUP



EAST AFRICA COMMERCIAL
& LOGISTICS CENTER
东非商贸物流中心

The 3F on the south side of the project is directly connected to the Ubungo station of the urban rapid bus BRT line.

The BRT has multiple lines and is equipped with exclusive BRT lanes, which is the most crowded means of transportation.





Project Description



凌航集团
LINGHANG GROUP



EAST AFRICA COMMERCIAL
& LOGISTICS CENTER
东非商贸物流中心

The 2F on the east side of the project is directly connected to the starting terminals of the BRT line of the city's rapid transit bus





Project Description



凌航集团
LINGHANG GROUP



EAST AFRICA COMMERCIAL
& LOGISTICS CENTER
东非商贸物流中心

4F of this project signed a contract with the Tanzanian government agency to enter and carry out integrated office
Provide government services for various government affairs and customs clearance of merchants



达累斯萨拉姆省政府
一体化办公室



Project Description

There is a rooftop parking lot on the 4F of this project to serve the market to the greatest extent;
Double squares are set up on the 1st and 3rd floors on the south side to provide operating activities for various exhibitions and promotional activities.



凌航集团
LINGHANG GROUP



EAST AFRICA COMMERCIAL
& LOGISTICS CENTER
东非商贸物流中心



Six Reasons To Choose EACLC



凌航集团
LINGHANG GROUP



EAST AFRICA COMMERCIAL
& LOGISTICS CENTER
东非商贸物流中心

Reason 1: The largest scale

EACLC has a large scale of 75,000 square meters, with 2000 merchants operating in the same field.

plaza name	Building area (square meters)
EACLC	75000
MLIMANI CITY MALL	15000
CITY MALL	12000

Six Reasons To Choose EACLC

Reason 2: Full-featured.

Integrating wholesale, retail, logistics, warehousing, exhibition, culture, business, tourism and many other functions;



Wholesale



Retail



Logistics



Warehousing



Exhibition



Culture



Business



Sightseeing

Six Reasons To Choose EACLC



凌航集团
LINGHANG GROUP



EAST AFRICA COMMERCIAL
& LOGISTICS CENTER
东非商贸物流中心

Reason 3: Rich categories

Gathering local businesses and worldwide manufacturers, rich brands, categories of products.



Six Reasons To Choose EACCLC



凌航集团
LINGHANG GROUP



EAST AFRICA COMMERCIAL
& LOGISTICS CENTER
东非商贸物流中心

Reason 4: Perfect supporting service

Developed and convenient transportation network, integrated customs clearance services, work permit assistance, preferential tax policies, cross-border e-commerce platform and other perfect supporting services for project businesses



Six Reasons To Choose EACLC



凌航集团
LINGHANG GROUP



EAST AFRICA COMMERCIAL
& LOGISTICS CENTER
东非商贸物流中心

Reason 5: Advanced management

Professional operation team provides support for merchant operation, property service team provides a comfortable and safe business environment;



Six Reasons To Choose EACLC



凌航集团
LINGHANG GROUP



EAST AFRICA COMMERCIAL
& LOGISTICS CENTER
东非商贸物流中心

Reason 6: Investment guarantee

The unique modern professional trading market in whole East Africa.
Future unlimited business opportunities for the market to provide value preservation and appreciation attributes



Nine Big Actions to create endless business opportunities for merchants



凌航集团
LINGHANG GROUP



EAST AFRICA COMMERCIAL
& LOGISTICS CENTER
东非商贸物流中心

Action 1. Cross Cooperation Exhibitions

Create a trade fair that never ends





凌航集团
LINGHANG GROUP



EAST AFRICA COMMERCIAL
& LOGISTICS CENTER
东非商贸物流中心

Nine Big Actions to create endless business opportunities for merchants

Action 2. Cross-border e-commerce

Globalized network marketing, and Integrated online and offline trade markets



Nine Big Actions to create endless business opportunities for merchants



凌航集团
LINGHANG GROUP



EAST AFRICA COMMERCIAL
& LOGISTICS CENTER
东非商贸物流中心

Action 3. Policy assistance

Various types of policy assistance and support, so that businesses operate without worry



Nine Big Actions to create endless business opportunities for merchants



凌航集团
LINGHANG GROUP



EAST AFRICA COMMERCIAL
& LOGISTICS CENTER
东非商贸物流中心

Action 4. Integration and promotion

All-round and three-dimensional publicity and promotion, so that the merchant brand and sales go hand in hand



Nine Big Actions to create endless business opportunities for merchants



凌航集团
LINGHANG GROUP



EAST AFRICA COMMERCIAL
& LOGISTICS CENTER
东非商贸物流中心

Action 5. Integrate resources

Integrate various industry resources to boost the market.





凌航集团
LINGHANG GROUP



EAST AFRICA COMMERCIAL
& LOGISTICS CENTER
东非商贸物流中心

Nine Big Actions to create endless business opportunities for merchants

Action 6. Linkage between supply and demand

Promote the linkage of merchants' commodity producing areas, and promote the integration of production and marketing, supply and demand industries



Nine Big Actions to create endless business opportunities for merchants



凌航集团
LINGHANG GROUP



EAST AFRICA COMMERCIAL
& LOGISTICS CENTER
东非商贸物流中心

Action 7. Perfect property management

Provide scientific and humanized property management, create a comfortable and safe business environment



Nine Big Actions to create endless business opportunities for merchants



凌航集团
LINGHANG GROUP



EAST AFRICA COMMERCIAL
& LOGISTICS CENTER
东非商贸物流中心

Action 8 Chamber of commerce in unity

Establish a chamber of commerce to pool their wisdom and strength to prosper the market



Nine Big Actions to create endless business opportunities for merchants



凌航集团
LINGHANG GROUP



EAST AFRICA COMMERCIAL
& LOGISTICS CENTER
东非商贸物流中心

Action 9. Operation of a flourishing market

Organize regular operation activities with merchants to promote sales performance





Introduction to the Chamber of Commerce



凌航集团
LINGHANG GROUP



EAST AFRICA COMMERCIAL
& LOGISTICS CENTER
东非商贸物流中心

EACLC Chamber of Commerce is actively promoting economic, trade and cultural exchanges between China and Tanzania in response to the important development strategy of the Chinese government under the general trend of global economic integration, which was formally established in 2019 in response to the extensive requirements of many enterprises and people of insight from all walks of life in China and Tanzania.





Chamber of Commerce goals

The ultimate goal of the EACLC Chamber of Commerce is to connect China and the East African region based on the core of East Africa, to provide services for the "One Belt One Road Initiative" development strategy, to promote economic, trade cooperation and cultural exchanges between China and Tanzania and the region.

Serve The Government
Serve The Enterprise
Serve The Society



凌航集团
LINGHANG GROUP



**EAST AFRICA COMMERCIAL
& LOGISTICS CENTER**
东非商贸物流中心





Join the Chamber of Commerce



凌航集团
LINGHANG GROUP



EAST AFRICA COMMERCIAL
& LOGISTICS CENTER
东非商贸物流中心

Required documents and annual fee

2000000 Tanzanian shilling per year

equivalent
currency

5526

RMB

862

Dollar



Chamber of Commerce Services



凌航集团
LINGHANG GROUP



EAST AFRICA COMMERCIAL
& LOGISTICS CENTER
东非商贸物流中心

buy shop

1. Members have the right to preferentially select locations and purchase shops in the EACLC project.
2. Members will get a 1% discount when purchasing EACLC shops.
3. Members who successfully purchase EACLC shops will be automatically upgraded to lifetime members and enjoy all the rights and interests of members.





Chamber of Commerce Services



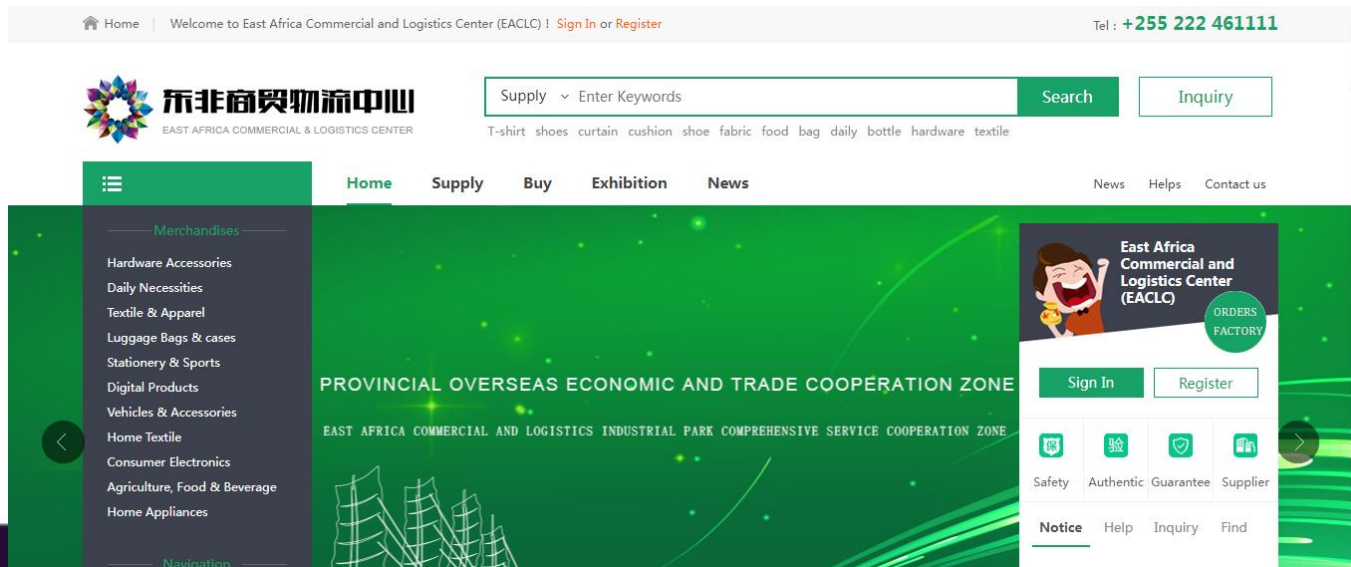
凌航集团
LINGHANG GROUP



EAST AFRICA COMMERCIAL
& LOGISTICS CENTER
东非商贸物流中心

Cross-border e-commerce

We have established a cross-border e-commerce platform www.eaclc.com where members can publish and obtain information on various sources of goods and transactions on the website. Through the website, the economic and trade cooperation and exchanges between China and East African member companies can be greatly strengthened;





Chamber of Commerce Services



凌航集团
LINGHANG GROUP



EAST AFRICA COMMERCIAL
& LOGISTICS CENTER
东非商贸物流中心

Docking country of origin

China has a world-class whole-industry production supply chain. According to the operating status of member companies, we can effectively connect with the origin of their products and obtain more high-quality and affordable product supply chains for member companies;





Chamber of Commerce Services



凌航集团
LINGHANG GROUP



EAST AFRICA COMMERCIAL
& LOGISTICS CENTER
东非商贸物流中心

Cooperation and exchange

China

**East
Africa**

Tanzania

As an important window and exchange platform for attracting investment, promoting cooperation and enhancing friendship, in order to expand exchanges between China and Tanzania, explore international markets, find ways of cooperation and business opportunities, learn the management model of advanced enterprises, increase technical exchanges and cooperate with other enterprises to strengthen business operations. management, improve energy efficiency, promote the development of member enterprises, and make member enterprises bigger and stronger. We will regularly organize member companies to go abroad, visit advanced companies, learn successful experiences, and carry out cooperation, exchanges and investment.

**Members can enjoy air ticket booking,
hotel booking and other services when they go to China**



Chamber of Commerce Services



凌航集团
LINGHANG GROUP



EAST AFRICA COMMERCIAL
& LOGISTICS CENTER
东非商贸物流中心

Integrated customs clearance, payment advance

In order to facilitate members to provide more efficient international cooperation, we provide member companies with unified customs clearance and trade payment and other services to comprehensively solve the international trade problems of member companies;





Chamber of Commerce Services



凌航集团
LINGHANG GROUP



EAST AFRICA COMMERCIAL
& LOGISTICS CENTER
东非商贸物流中心

legal service

Provide explanations, suggestions and solutions for various legal issues encountered by member units in China and Tanzania.





Member Service Process



凌航集团
LINGHANG GROUP



**EAST AFRICA COMMERCIAL
& LOGISTICS CENTER**
东非商贸物流中心

1、understand customer's needs

(Provide pictures, materials, specifications, requirements)



2、Purchase inquiry

(Report financials, calculations, FOB, CIF, DDP prices)



3、customer quotation



4、Sign purchase contract, make payment



5、Arrival of the goods, settlement of the balance, custom clearance, tax clearance



6、Order completed, continue to follow up



凌航集团
LINGHANG GROUP



EAST AFRICA COMMERCIAL
& LOGISTICS CENTER
东非商贸物流中心

Thanks For Watching



+255 222 461 111

Website: <http://www.eaclc.com>



: EACLC_official



: EACLC linghang